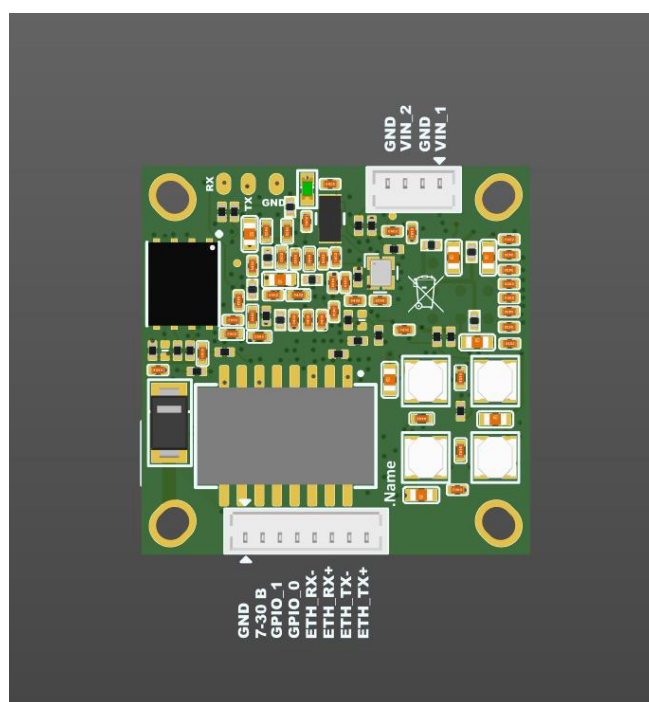
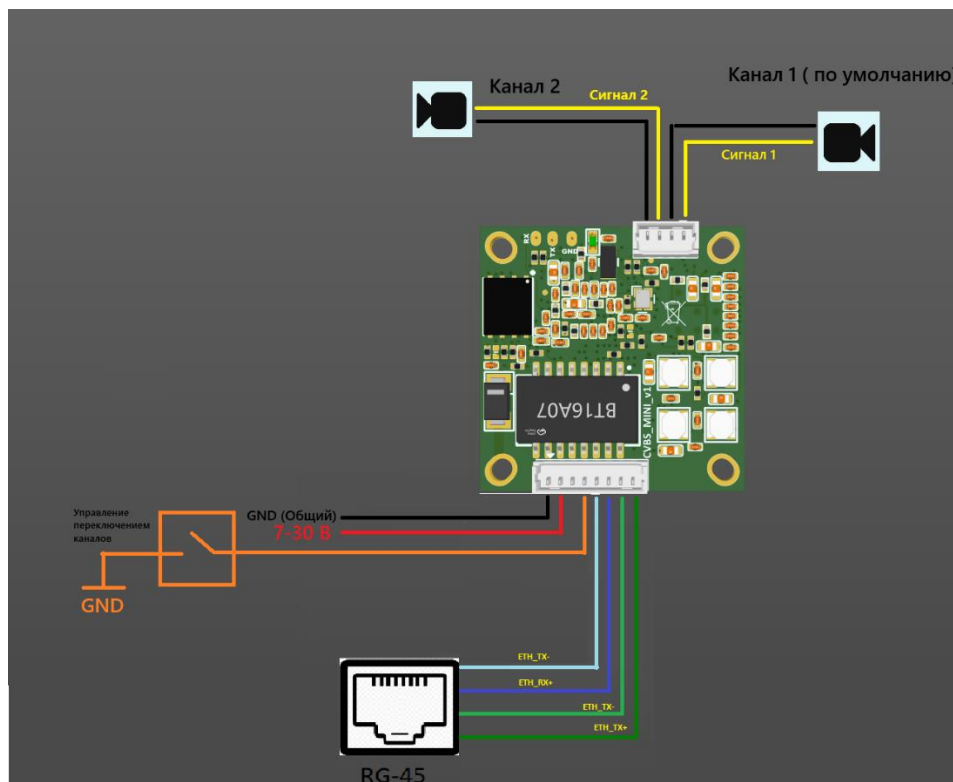


Спасибо что приобрели наше устройство!

1. Подключение цепей питания и связи Ethernet

Произведите подключение согласно схеме на рисунке 1



Переключение каналов входа видео

Для переключения с одного канала на другой необходимо контакт (Оранжевая линия) замкнуть на GND.

До тех пор пока контакт замкнут на GND будет идти трансляция со второго видеовхода

ВНИМАНИЕ! Превышение напряжения на входе выше 3,5 вольт выведет из строя устройство

Установка IP Адреса (Изменение со стандартного)

По умолчанию установлен фиксированный IP адрес 192.168.0.218. Для изменения адреса необходимо Изменить настройки сетевой карты, если ваша подсеть отличная от подсети камеры (общие инструкции по изменению доступны в поиске Яндекса)

После настройки ПК необходимо помощью Браузера зайти на плату конвертора по адресу 192.168.0.218

The screenshot shows the OpenIPC lite web interface. At the top, there is a navigation menu with options: Information, Majestic, Firmware, Tools, Extensions, and Preview. The main content area features a red warning box stating: "This camera uses MAC address 00:00:23:34:45:66 which is a placeholder. You need to replace it with the original MAC address from your stock firmware backup or generate a random valid MAC address." Below this, there is a text input field for "New MAC Address" and a "Change MAC address" button. A note below the button states: "Please note that the new MAC address will most likely give the camera a new IP address assigned by the DHCP server!"

Below the warning box, the "Device Status" section is visible, divided into "Hardware" and "Firmware" information.

Hardware		Firmware	
Processor	gk7205v300	Version	2.4.10.14-lite
Family	gk7205v200	Build	master+1b89fe0, 2024-10-14
Sensor		Majestic	master+98571ed, 2024-10-14
Flash	16 MB		

Below the device status, there are sections for system resources:

uptime
22:48:48 up 0 min, Load average: 0.24, 0.06, 0.02

df -hT

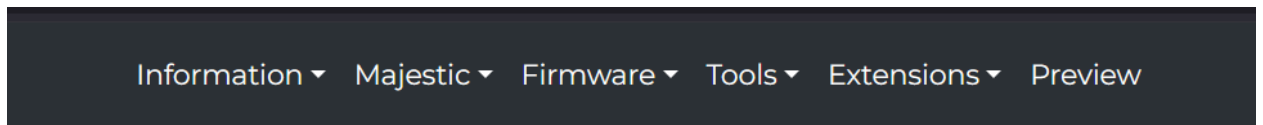
Filesystem	Type	Size	Used	Available	Use%	Mounted on
/dev/root	squashfs	4.9M	4.9M	0	100%	/rom
devtmpfs	devtmpfs	12.7M	0	12.7M	0%	/dev
/dev/mtdblock4	jffs2	2.7M	244.0K	2.4M	9%	/overlay
overlay	overlay	2.7M	244.0K	2.4M	9%	/
tmpfs	tmpfs	60.8M	0	60.8M	0%	/dev/shm
tmpfs	tmpfs	60.8M	12.0K	60.8M	0%	/tmp
tmpfs	tmpfs	60.8M	28.0K	60.8M	0%	/run

free -h

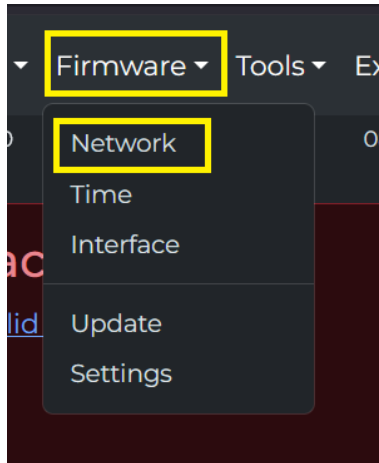
	total	used	free	shared	buff/cache	available
Mem:	121.6M	17.0M	92.0M	104.0K	12.6M	102.1M
Swap:	0	0	0			

При необходимости можно установить MAC адрес, если это требуется для вашего применения.

Меню настроек и параметров.



Зайти в



Появится страница изменения настроек

OpenIPC lite Information Majestic Firmware Tools Extensions Preview

gk7205v300 (gk7205v200 family), bt656, 16 MB nor flash, 2.4.10.14-lite, openipc-gk7205v300, 08.06.2025, 15:28:40 Etc/GMT 70°C

This camera uses MAC address **00:00:23:34:45:66** which is a placeholder.
You need to replace it with the original MAC address from your stock firmware backup or [generate a random valid MAC address](#).

New MAC Address

Please note that the new MAC address will most likely give the camera a new IP address assigned by the DHCP server!

Network Settings

Hostname:

Network interface:

Use DHCP

IP Address:

IP Netmask:

Gateway:

DNS:

Reset network configuration
Restore the config file bundled with firmware.
All changes to the default configuration will be lost!

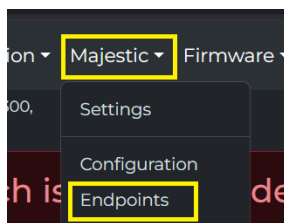
```
# cat /etc/network/interfaces.d/eth0
iface eth0 inet static
    hwaddress ether $(fw_printenv -n ethaddr || echo 00:00:23:34:45:66)
    address 192.168.0.218
    netmask 255.255.255.0
    gateway 192.168.0.1
pre-up echo nameserver 192.168.0.1 > /tmp/resolv.conf

# ifconfig
eth0      Link encap:Ethernet  HWaddr 00:00:23:34:45:66
          inet addr:192.168.0.218  Bcast:0.0.0.0  Mask:255.255.255.0
          inet6 addr: fe80::200:23ff:fe34:4566/64  Scope:Link
          UP BROADCAST RUNNING MULTICAST  MTU:1500  Metric:1
          RX packets:30872  errors:0  dropped:0  overruns:0  frame:0
          TX packets:25510  errors:0  dropped:0  overruns:0  carrier:0
          collisions:0  txqueuelen:1000
          RX bytes:952060 (929.7 KiB)  TX bytes:45282223 (43.1 MiB)
          Interrupt:25

lo        Link encap:Local Loopback
          inet addr:127.0.0.1  Mask:255.0.0.0
          inet6 addr: ::1/128  Scope:Host
          UP LOOPBACK RUNNING  MTU:65536  Metric:1
          RX packets:7398  errors:0  dropped:0  overruns:0  frame:0
          TX packets:7398  errors:0  dropped:0  overruns:0  carrier:0
          collisions:0  txqueuelen:1
          RX bytes:613689 (599.3 KiB)  TX bytes:613689 (599.3 KiB)
```

После изменения сетевых настроек нажать кнопку Save Changes. Перезагрузить устройство.

RTSP ссылка на поток доступна в меню



This camera uses MAC address **00:00:23:34:45:66** which is a placeholder.

You need to replace it with the original MAC address from your stock firmware backup or [generate a random valid MAC address](#).

New MAC Address

Change MAC address

Please note that the new MAC address will most likely give the camera a new IP address assigned by the DHCP server!

Majestic Endpoints

Video

<rtsp://root:12345@192.168.0.218/stream=0>
RTSP main stream.

<rtsp://root:12345@192.168.0.218/stream=1>
RTSP sub stream.

<http://192.168.0.218/mjpeg>
MJPEG video stream.

<http://192.168.0.218/video.mp4>
MP4 video stream.

<http://192.168.0.218/hls>
HLS live-streaming in web browser.

<http://192.168.0.218/mjpeg.html>
MJPEG live-streaming in web browser.

Night

<http://192.168.0.218/night/on>
Turn on night mode.

<http://192.168.0.218/night/off>
Turn off night mode.

<http://192.168.0.218/night/toggle>
Toggle night mode.

<http://192.168.0.218/night/ircut>
Toggle camera ircuit.

<http://192.168.0.218/night/light>
Toggle camera light.

Audio

<http://192.168.0.218/audio.opus>
Opus audio stream.

<http://192.168.0.218/audio.m4a>
AAC audio stream.

<http://192.168.0.218/audio.pcm>
Raw PCM audio stream.

<http://192.168.0.218/audio.alaw>
A-law compressed audio stream.

<http://192.168.0.218/audio.ulaw>
μ-law compressed audio stream.

<http://192.168.0.218/audio.g711a>
G.711 A-law audio stream.

http://192.168.0.218/play_audio
Play audio file on camera speaker.

Images

<http://192.168.0.218/image.jpg>
Snapshot in JPEG format.

<http://192.168.0.218/image.heif>
Snapshot in HEIF format.

<http://192.168.0.218/image.yuv420>
Snapshot in YUV420 format.

Monitoring

<http://192.168.0.218/api/v1/config.json>
Default Majestic config in JSON format.

<http://192.168.0.218/api/v1/config.schema.json>
Available Majestic settings in JSON format.

<https://github.com/openipc/wiki>
Available Majestic settings in YAML format.

<http://192.168.0.218/metrics>
Node exporter for [Prometheus](#).